



DEC 2025

ET4 Series Third Party Accessories Guide

The right-priced rugged tablets that have it all

For the latest version of this guide and more,
please visit www.zebra.com/et4x



Contents

I.	Gamber-Johnson	3
ii.	InfoCase	7
III.	HAVIS	11
IV.	ProClip / Brodit	13
V.	RAM® Mounts and GDS® Tech™	17
VI.	CTA Digital	22
VII.	MTI	24

Note: Products sold that do not bear the Zebra brand name are serviced and supported exclusively by their manufacturers in accordance with terms and conditions packaged with the products. Zebra’s Limited Warranty does not apply to products that are not Zebra branded, even if packaged or sold with Zebra products. Please contact the manufacturer directly for technical support and customer service.



RUGGED SOLUTIONS FOR ZEBRA ET4 SERIES

From in-vehicle mounts to slim docking solutions, Gamber Johnson delivers the accessories you need to keep your Zebra ET40, ET45 and ET401 tablets connected, powered, and protected in the most demanding environments.



DUAL USB

ETHERNET (RJ45)

SERIAL (RS232)



POGO PIN CHARGING



SLAM-LATCH SECURITY



GAMBERJOHNSON.COM

800.487.9220 | sales@gamberjohnson.com



ZEBRA ET4 SERIES 8" & 10" SLIM DOCKING STATION

Manage your fleets with precision. Stay connected with Gamber-Johnson’s rugged Docking Stations specifically designed for the Zebra ET40, ET45 and ET401 8" and 10" rugged tablet series.



CERTIFICATES & TESTING

- MIL-STD 810G Shock/ Vibration Tested
- MIL-STD 810G Environmental Testing: Humidity, High/low temperature, (storage/operational)
- SAE J1455 Crash Tested
- Cycle Tested: 30K cycles, docking connector, latching & locking mechanisms
- RoHS, FCC, CE, RCM Certifications

WEIGHT	HEIGHT	WIDTH	DEPTH
1.3 lbs / 0.58 kg	10.1 in / 26.65 cm	7.75 in / 19.69 cm	2.8 in / 7.11 cm

ITEM NUMBER	DESCRIPTION	USB 2.0	SERIAL (RS232)	ETHERNET (RJ45)
7160-1801-00	Docking Station (Bare Wire)	2		
7160-1801-02	Docking Station (Cigarette Adapter)	2		
7160-1801-04	Docking Station (2.5mm DC Power Jack)	2		
7160-1801-20	Docking Station (Lite Full Board Replication)	2	1	1
7160-1801-90	Cradle (no electronics)	Cradle Only		
7160-1807-00	Docking Station (Bare Wire)	2		
7160-1807-02	Docking Station (Cigarette Adapter)	2		
7160-1807-04	Docking Station (2.5mm DC Power Jack)	2		
7160-1807-20	Docking Station (Lite Full Board Replication)	2	1	1
7160-1807-90	Cradle (no electronics)	Cradle Only		

FEATURES

- Designed for the Zebra ET40, ET45 and ET401 8" and 10" rugged tablet
- Zebra’s rugged boot is required in order to work with docking station
- All features of tablet are functional while the tablet is safely docked
- Patented slam latch for simple, one-handed docking and release operation:
- Insert bottom of Zebra tablet into the docking station and push top of the tablet in until the lock engages.
- Push latch button up with your thumb then remove the tablet from the docking station.
- POGO pin connector provides power to charge the Zebra tablet while docked
- Barrel Key lock for theft deterrence
- VESA 75mm mounting pattern; compatible with Zirkona mounting products
- Bare Wire, 2.5mm DC Power Jack, and Full Port Replication options
- Can be mounted on a flat vertical surface
- Composite design for reduced overall weight
- Dual powered USB ports; 1.5A for each port for connecting peripheral devices
- Full port replication options available with (2) USB-A (1.5A each), RJ45 Ethernet and RS232 Serial



GAMBERJOHNSON.COM

800.487.9220 | sales@gamberjohnson.com



ACCESSORIES & MOUNTS FOR ZEBRA ET4 SERIES



Guard Leg Mount (7160-1995)

Securely mount tablets, keyboards, and scanners to forklift overhead guard legs with a single versatile solution. The Gamber-Johnson Guard Leg Mount features a rugged clam shell design and swing arm for flexible positioning, giving operators easy access to all devices in one location.



Adjustable Overhead Guard Bar Mount - Tall (7160-1591-01)

Adjustable mount designed with extended height and the flexibility to attach to angled or vertical cross bars on various OEM overhead guards. Positions and secures your device to maximize operator workspace; increase safety and ergonomics.



Flat Surface Magnet Mount With Tall Clevis (7160-1258-01)

Heavy duty magnets allow users to move the mount from vehicle to vehicle while allowing the protection, function and reliability Gamber-Johnson is known for.



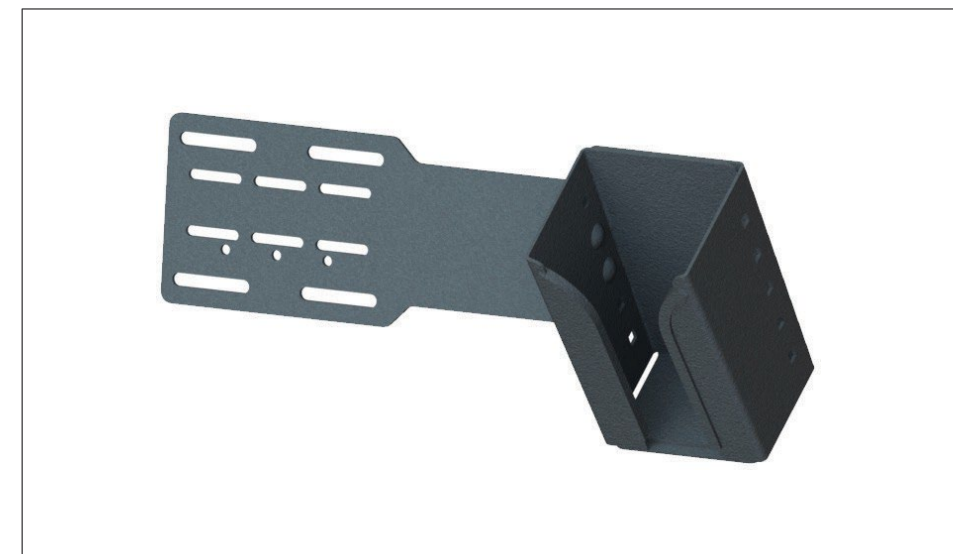
Zirkona 4 Diamond Mount with 6 Medium Dog-Bone and VESA 75mm Plate (7160-1466-01)

A lightweight, versatile mount engineered for durability and rigorously tested to excel in the toughest material handling environments.



Rugged Lite Keyboard (7160-1449-00)

A thin, lightweight, and ergonomic keyboard designed as a cost-effective solution for applications that don't require fully rugged devices. Pair it with Gamber-Johnson's Quick Release Keyboard Cradle for added convenience and efficiency.



Scanner Pocket Tablet Mount (7160-1389)

Minimize your work envelope by securely mounting your handheld device adjacent to your Gamber-Johnson dock/cradle.



LIND POWER SUPPLIES

- LIND 11-16V Automobile Power Adapter (7300-0415)
- LIND 12-32V Isolated Power Adapter (7300-0466)
- LIND 20-60V Isolated Power Adapter (7300-0467)
- LIND 72-110V Isolated Power Adapter (7300-0418)
- LIND AC-12V Material Handling Power Adapter (7300-0472)



GAMBERJOHNSON.COM

800.487.9220 | sales@gamberjohnson.com



ZEBRA ET40/ET45 10"2-IN-1 ATTACHABLE KEYBOARD

Gamber-Johnson's attachable keyboard for the ET40/ET45 enterprise rugged tablet is the perfect solution for the mobile worker. Install the tablet in seconds to add the functionality of a keyboard with a smooth responsive feel with features you are familiar with.

The USB port can be used to attach a flash drive or another peripheral and the keyboard's hard carry handle makes it easy to carry your tablet/keyboard combo anywhere. The compact design of the ET40/ET45 tablet and attachable keyboard make it a perfect productivity tool for the mobile worker looking for a rugged portable solution they can take anywhere. Not compatible with Zebra ET401.



WEIGHT	HEIGHT	WIDTH	DEPTH
1.31 lbs / 0.59 kg	2.03 in / 5.15 cm	10.8 in / 27.4 cm	9.71 in / 24.6 cm



All computer features including camera, microphone, speakers, USB-C port, barcode scanner and all control buttons are accessible when the tablet is docked onto the keyboard



Designed for the Zebra ET40/ET45 10" Series tablet without rugged frame Integrated center touchpad with right and left mouse buttons safely docked

USB 2.0 port (500mA) to attach a mouse, another peripheral, or flash drive

Silicone rubber keys with white lettering and a rugged polycarbonate case

PRODUCT SELECTION

ITEM NUMBER	DESCRIPTION
3PTY-GJ-7160-1789-00	KEYBOARD, 2-IN-1 ATTACH, ZEBRA 4TX, ENGLISH (USA)
3PTY-GJ-7160-1789-01	KEYBOARD, 2-IN-1 ATTACH, ZEBRA 4TX, ENGLISH (UK)
3PTY-GJ-7160-1789-03	KEYBOARD, 2-IN-1 ATTACH, ZEBRA 4TX, FRENCH
3PTY-GJ-7160-1789-04	KEYBOARD, 2-IN-1 ATTACH, ZEBRA 4TX, SPANISH
7160-1789-02	KEYBOARD, 2-IN-1 ATTACH, ET4X 10", GERMAN

OTHER FEATURES

- 76-key keyboard with 12 function keys for custom operation
- Easy to install - POGO docking connector links the tablet to the keyboard
- Easily connect the tablet to the keyboard; slip the bottom of the tablet into the case and snap the top of the case over the tablet
- Charge the tablet directly from the tablet's USB-C port
- Designed for the Zebra ET40/ET45 10" Series tablet without a rugged frame
- Friction hinge and screen footrest with rubber feet help position the tablet at a comfortable viewing angle
- Hard carry handle with two attachment rings for shoulder strap enhance portability
- Low-profile ergonomic design for ease of use in a mobile environment

PORT REPLICATION

- USB 2.0 port (500mA)

ACCESSORIES

- Shoulder Strap (7400-020-01)

SPECIFICATION

- Temperature range: OPERATING: -20°C to 60°C STORAGE: -40°C to 85°C
- Designed to IP54 ingress specifications
- Two million actuation per key
- RoHS, FCC Class B, CE, REACH, and C-Tick Certifications



GAMBERJOHNSON.COM

800.487.9220 | sales@gamberjohnson.com

ErGo Pro 360 Case for Zebra ET401 Tablets

ET401 8" with Scanner

PART NUMBER: FM-SNP-ET40X8

MSRP: \$59.99

ET401 8", no Scanner

PART NUMBER: FM-SNP-ET40X8-NS

MSRP: \$59.99

ET401 10" with Scanner

PART NUMBER: FM-SNP-ET40X10

MSRP: \$69.99

ET401 10", no Scanner

PART NUMBER: FM-SNP-ET40X10-NS

MSRP: \$69.99



Rugged Protection and Enhanced Mobility

The **ErGo Pro 360 Case for Zebra ET401 8-inch** is designed for professionals who demand the ultimate in versatility and performance. Combining the best of both worlds, this rugged yet lightweight case features an integrated 360-degree rotating hand strap and a friction-hinged easel stand—giving you the freedom to work hands-on or hands-free, wherever the job takes you.

Key Features

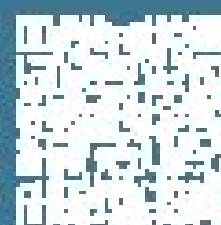
- Exceeds MIL-STD-810H (military standard) drop testing by SGS at 5 ft
- Built-in adjustable hand strap rotates a full 360-degrees for enhanced grip and seamless transition between any orientation
- Built-in friction-hinged easel stand for adjustable viewing angles
- Precision-fit design with cut-out for built-in device scanner functionality (scanner models only)
- Compatible with Zebra Work Station Connect Cradle and Charging Station
- Drop and shock protection with reinforced corners
- Corner retention slots facilitate additional solutions
- Lightweight design reduces bulk
- Clear polycarbonate for visibility of asset tags
- Open access to all I/O ports
- Quick and easy installation



with Scanner



without Scanner



Mobility Solutions for Zebra ET401

ModuFlex Elastic Hand Strap

Provides the user with a low-profile hand strap that offers a connected hand feel while providing the flexibility/adjustability to slide the hand strap up onto the forearm to free the user’s hands.

ET401 8"
InfoCase Part #: FM-XBKHS-ET4X8
Zebra Part #: 3PTY-GJ-XBKHS-ET4X8
List Price: \$59.00

ET401 10"
InfoCase Part#: FM-XBKHS-ET4X10
Zebra Part#: 3PTY-GJ-XBKHS-ET4X10
List Price: \$59.00



ModuFlex 360 Hand Strap with Easel (10" only)

Improves productivity and efficiency by reducing hand, wrist and arm fatigue. The rotating hand strap can rotate 360° for optimal convenience while the easel stand gives the user an adaptable workstation. Also supports our ModuFlex User Harness.

Vinyl
InfoCase Part #: FM-MFXPRO-ET4X10
Zebra Part #: TBD

Ballistic Nylon
InfoCase Part #: FM-MFXPRO-ET4X10-B
Zebra Part #: TBD

List Price: \$99.00
Requires: Zebra Rugged Boot



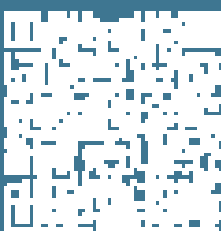
ModuFlex Mobility Bundle

Designed for enhanced mobility and hands-free use with your tablet, when it does not otherwise have a handle. It comes with a removable handle and ergonomic shoulder strap.

ET401 8"
InfoCase Part #: FM-TABMBBDL-1
Zebra Part #: TBD
List Price: \$39.00

ET401 10"
InfoCase Part #: FM-MBBDL-1
Zebra Part #: 3PTY-INF-FM-MBBDL-1
List Price: \$39.00

Requires: ErGo Pro Case or Zebra Rugged Boot



Rugged Case with Adjustable Elastic Hand Strap for Zebra ET4x

Lightweight and durable, this polycarbonate shell and elastic strap provides a convenient, comfortable manner to hold or carry the ET4x device. Entering data or device viewing is enhanced with reduced fatigue in the forearm, wrist, and hand. The 4 corner anchor points facilitate the use of additional accessories, such as a shoulder strap or user harness for hands-free device wear-ability.

ET4x 8"

InfoCase Part #: FM-SNP-ET4X8-HSTP

Zebra Part #: 3PTY-INF-ET4X8-HSTP

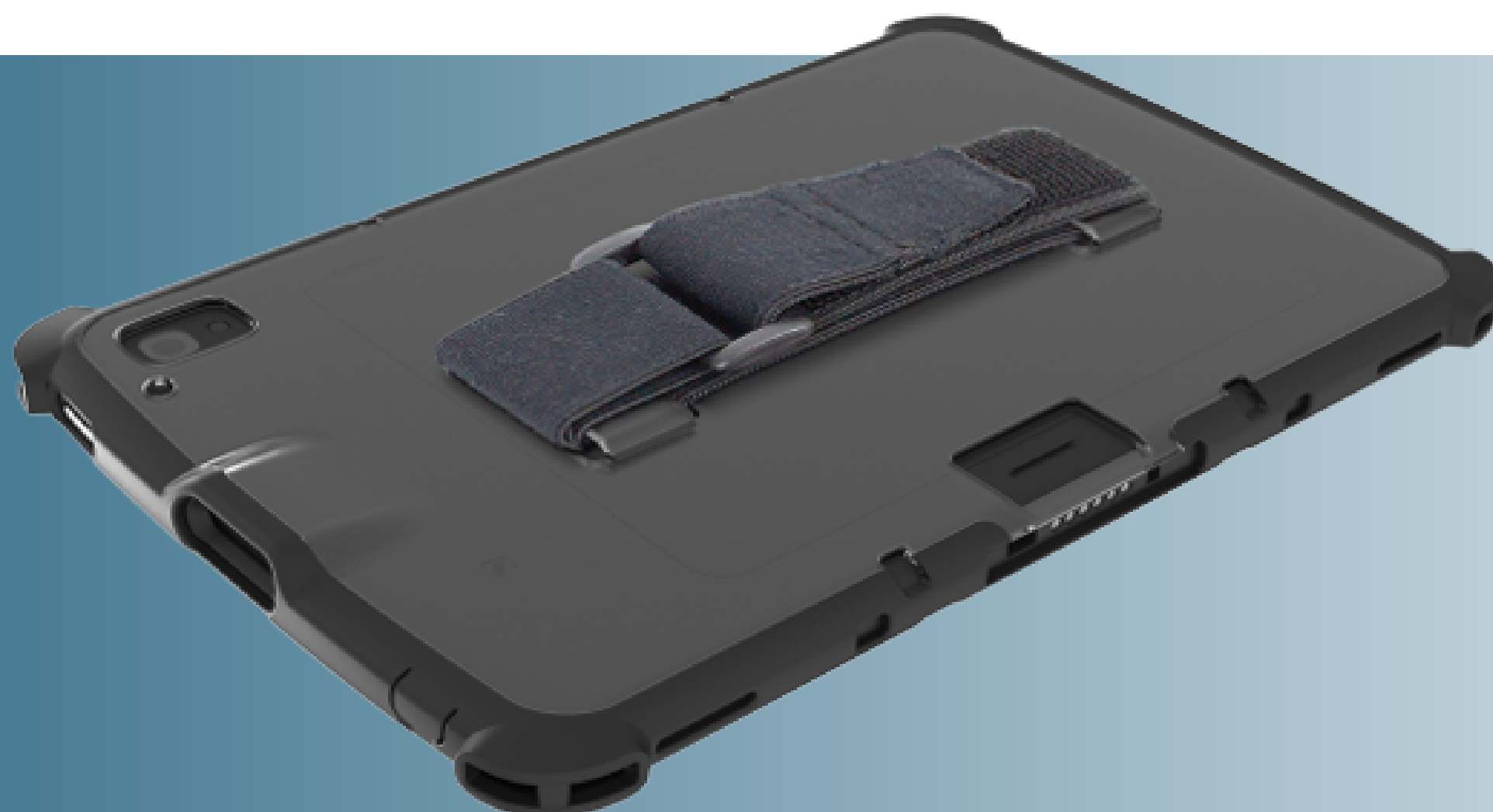
List Price: \$54.99

ET4x 10"

InfoCase Part #: FM-SNP-ET4X10-HSTP

Zebra Part #: 3PTY-INF-ET4X10-HSTP

List Price: \$59.99



Features:

- Low-profile adjustable hand strap
 - accommodates most users
- Hand strap also available in DuraStrap material
 - 100% impermeable and sanitizable
 - ideal for healthcare and other bio-sensitive environments
- Compatible with Zebra Work Station Connect Cradle and Charging Station
- Clear polycarbonate provides visibility to asset tags

Rugged Case with Adjustable Rotating Hand Strap for Zebra ET4x

Lightweight and durable, this polycarbonate shell and integrated rotating hand strap provides a convenient, comfortable manner to hold or carry the ET4x device. Entering data or device viewing is enhanced with reduced fatigue in the forearm, wrist, and hand. The 4 corner anchor points facilitate additional accessories, such as a shoulder strap or user harness for hands-free device wear-ability.

ET4x 8"

InfoCase Part #: FM-SNP-ET4X8-RHS

Zebra Part #: 3PTY-INF-ET4X8-RHS

List Price: \$54.99

ET4x 10"

InfoCase Part #: FM-SNP-ET4X10-RHS

Zebra Part #: 3PTY-INF-ET4X10-RHS

List Price: \$59.99

- Low-profile adjustable 360° rotating hand strap accommodates most users
- Closed back for added protection
- Compatible with vehicle docks/cradles
- Clear polycarbonate provides visibility to asset tags
- Integrated 4 corner anchor points
- Improved facilitation for additional Zebra ET4x accessories



Custom fit, laser cut tempered glass provides additional defense against scratching and impact

- Scratch resistant 9H hardness tempered glass.
- Multi-layer bonding process provides high impact resistance.
- High light transmittance delivers exception optical clarity.
- Oleophobic coating is finger print resistant.
- High optical clarity and anti-smudge coating delivers a clear viewing experience.

ET4X 10"

InfoCase Part #: INF-SG-ZEB-ET4X10

Zebra Part #: TBD

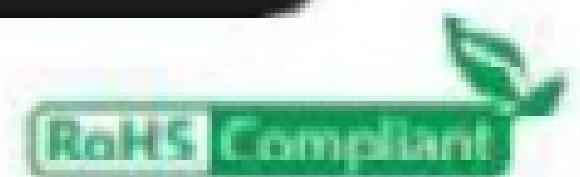
List Price: \$29.99

ET4X 8"

InfoCase Part #: INF-SG-ZEB-ET4X8

Zebra Part #: TBD

List Price: \$24.99



Privacy Screen Protection

- Same scratch resistant 9H hardness as tempered glass screen protector
- Limited viewing angle of +/- 30° limits the field of vision
- Low reflective coating reduces glare
- Touch and stylus compatible
- Bubble-free, easy installation

ET4X 10"

InfoCase Part #: INF-PF-ZEB-ET4X10

Zebra Part #: TBD

List Price: \$49.99

ET4X 8"

InfoCase Part #: INF-PF-ZEB-ET4X8

Zebra Part #: TBD

List Price: \$44.99



Scan Here to
Learn More





RUGGED DOCKING STATION FOR ZEBRA ET4 SERIES 8" & 10" TABLETs

DS-ZEB-300 SERIES

ET4 SERIES TABLET SOLUTION

- Height-adjustable design compatible with both ET4X & ET401 devices with rugged boot
- LED power indicator
- One-handed docking & undocking
- Spring-loaded, floating connector head
- Provides access to critical buttons, ports & barcode scanner when docked
- Compact & lightweight design
- Compatible with attachable hand & shoulder straps
- Integrated VESA 75 mounting pattern



PART NUMBER	ETHERNET	USB 2.0	POWERED SERIAL	POWER INPUT	INT POWER
3PTY-DS-ZEB-302-ISO		1 REAR		18-75V	ISO
3PTY-DS-ZEB-303					
3PTY-DS-ZEB-304	1	2 REAR	1 @ 5V	9-36V	NON-ISO
3PTY-DS-ZEB-305-ISO	1	2 REAR	1 @ 5V	18-75V	ISO



UNIVERSAL RUGGED CRADLE FOR 7"- 9" DEVICES UT-301

- Patented, non-electronic computing solution
- Easy to use three point adjustment
- Extra durable leg retainers
- Low profile design maximizes space
- Rounded corners and edges for safety and airbag deployment
- Simple, safe, and secure connectivity
- Accommodates recommended screen covers
- Lock and key supplied for theft deterrence
- Fits: Zebra 8" ET4X & ET401 with or without rugged boot



MOUNTING SOLUTIONS FOR ZEBRA ET4 SERIES 8" & 10" TABLETS

*8" DEVICES REQUIRE EITHER HAVIS DS-ZEB-300 SERIES DOCK/CRADLE OR UT-301

*10" DEVICES REQUIRE EITHER HAVIS DS-ZEB-300 SERIES DOCK/CRADLE OR VESA ADAPTER EXPANSION BACK ZBK-ET4X-10VESA-01



HEAVY-DUTY POLE MOUNT PACKAGE PKG-PMB-409

- Heavy-duty pillar mount with 2.25" dual ball adjustment
- 10 lb carry weight capacity
- TPU over-molded steel clamps provide strength and vibration dampening - ideal for forklifts
- Arm of pedestal allows for swivels on both the top & bottom, providing double 360-degree rotation
- Compatible with 4-hole AMPS pattern



SINGLE MONITOR MOUNT & 18" POLE 3PTY-MM-10-850

- Offers versatile monitor positioning for Retail, Hospitality, Healthcare, Workplace and Warehouse markets that require durable and ergonomic device mounting
- 1.75" diameter pole is large enough for most cables and connectors to pass through
- Includes edge liner to protect cables as they enter the pole



HEAVY DUTY DISPLAY MOUNT WITH FREE STANDING BASE 3PTY-DM-10-112

- An ideal retail, hospitality or healthcare display mount for a single VESA 75 or VESA 100 compliant display weighing up to 18 lbs (8.2 kg)
- Allows the display to tilt 90° and the stand to rotate 300°
- Easy adjustable tilt and rotation tensioning to suit user preferences
- Extra durable leg retainers
- Enhances user comfort and minimizes screen glare
- Also available with dual display



COUNTERTOP SELF-CHECKOUT WITH FIXED BASE 3PTY-SC-1000-CF

- Device mounting kiosk for retail, hospitality, healthcare & anywhere self-serve POS or check-in are required
- Adjustable display height for ideal positioning
- Monitor tilt from 0 to 90 degrees for superior ergonomics and easy printer paper changeout
- Display flip-over option for easy screen sharing



ZEBRA

ET4 SERIES

FORKLIFT

Our rugged cradles keep your devices safely mounted to ensure your warehouse runs smoothly and reduces costs.

TRANSPORTATION

Keep your device easily accessible, charged and secure with convenient one-handed docking and removal.

RETAIL

Whether you are line busting, creating a POS or engaging in inventory control, keep your ET4x tablet secure and ready to use.

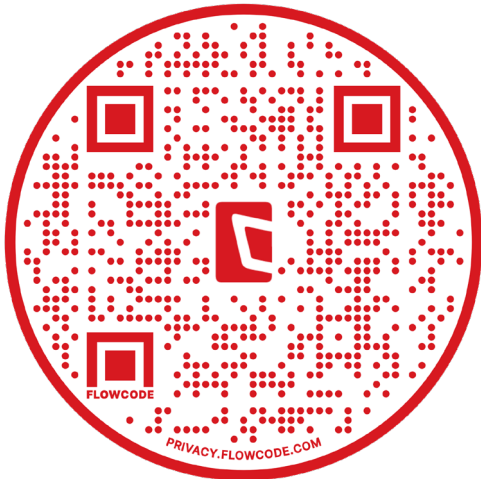
- Custom-fit design for tablets with or without rugged boot
- Easy one-handed docking and removal of the device
- Heavy-duty materials protect your tablet and increase longevity
- Fast lead times of 2-4 weeks for large deployments
- Multiple mounting options to fit the exact use case



ET40 ET45 8" CRADLES							
PART #	NON-CHARGE	POGO PIN CHARGE	USB-A HOST	RUGGED BOOT	EXPANSION BACK	KEY LOCK	SPRING LOCK
3PTY-PCLIP-216331		•		Boot or Bare			
3PTY-PCLIP-216376		•				A	B
3PTY-PCLIP-216377		•	•			A	B
3PTY-PCLIP-216378		•		•		C	D
3PTY-PCLIP-216379		•	•	•		C	D
3PTY-PCLIP-216380		•		•	•	E	F
3PTY-PCLIP-216381		•	•	•	•	E	F
3PTY-PCLIP-710317	•					A	B

KEY AND SPRING LOCK MODULES	KEY
3PTY-PCLIP-216312	A
3PTY-PCLIP-216313	B
3PTY-PCLIP-216316	C
3PTY-PCLIP-216317	D
3PTY-PCLIP-216340	E
3PTY-PCLIP-216341	F

POWER SUPPLIES	CIG PLUG	AC OUTLET	HARD-WIRED
3PTY-PCLIP-216355			•
3PTY-PCLIP-216358	•		
3PTY-PCLIP-941025		•	

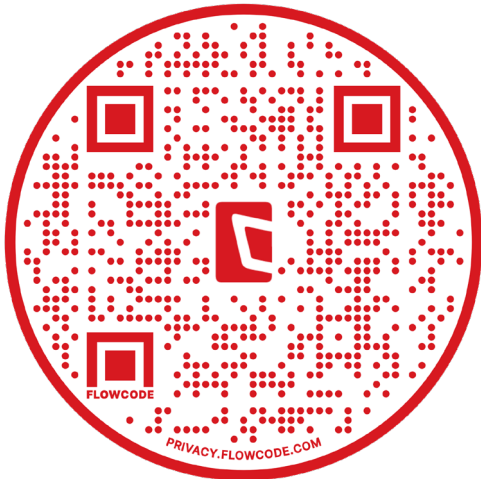


EXPLORE OUR PRODUCTS

ET40 ET45 10" CRADLES							
PART #	NON-CHARGE	POGO PIN CHARGE	USB-A HOST	RUGGED BOOT	EXPANSION BACK	KEY LOCK	SPRING LOCK
3PTY-PCLIP-216331		•		Boot or Bare			
3PTY-PCLIP-216382		•				A	B
3PTY-PCLIP-216383		•	•			A	B
3PTY-PCLIP-216384		•		•		C	D
3PTY-PCLIP-216385		•	•	•		C	D
3PTY-PCLIP-216386		•		•	•	E	F
3PTY-PCLIP-216387		•	•	•	•	E	F
3PTY-PCLIP-710319	•					A	B
3PTY-PCLIP-710320	•			•		C	D

KEY AND SPRING LOCK MODULES	KEY
3PTY-PCLIP-216312	A
3PTY-PCLIP-216313	B
3PTY-PCLIP-216316	C
3PTY-PCLIP-216317	D
3PTY-PCLIP-216340	E
3PTY-PCLIP-216341	F

POWER SUPPLIES	CIG PLUG	AC OUTLET	HARD-WIRED
3PTY-PCLIP-216355			•
3PTY-PCLIP-216358	•		
3PTY-PCLIP-941025		•	



EXPLORE OUR PRODUCTS

ET401 8" CRADLES									
PART #	NON-CHARGE	POGO PIN CHARGE	USB-A HOST	USB-C CHARGE	CIG PLUG	HARD WIRED	KEY LOCK	BOOT	EXPANSION BACK
710454	•							•	•
712454		•	•		•			•	•
713454		•	•			•		•	•
735454		•	•		•		•	•	•
736454		•	•			•	•	•	•
217214	•								
217215				•	•				
217216				•		•			
217217				•	•		•		
217218				•		•	•		

ET401 10" CRADLES									
PART #	NON-CHARGE	POGO PIN CHARGE	USB-A HOST	USB-C CHARGE	CIG PLUG	HARD WIRED	KEY LOCK	BOOT	EXPANSION BACK
710455	•							•	•
712455		•	•		•			•	•
713455		•	•			•		•	•
735455		•	•		•		•	•	•
736455		•	•			•	•	•	•
217219	•								
217220				•	•				
217221				•		•			
217223				•	•		•		
217224				•		•	•		



Which dock is right for you?

1 Identify Your Device

2 Select Your Case

3 Choose Your Dock



ET401
8" or 10"



ET40/ET45
8" or 10"



RAM® Rugged Boot



RAM® Tough-Dock™
Pg 2



IntelliSkin®



GDS® UniConn™ Dock, or
GDS® Tough-Dock™
Pg 3-4



RAM® Pogo Pin Docks and Rugged Boot

- › Compatible with ET401 with RAM® Boot and ET40/ET45 in a Zebra Rugged Boot
- › Docks utilize built-in pogo pins to enable charging and peripheral connection when device is docked
- › Corner attachment points for shoulder strap accessories
- › Works with and without the scanner version of the ET401
- › Dock and boot accommodate expansion backs and other accessories that install to the back of the tablet



RAM-SKIN-ZE44
RAM® Rugged Boot for ET401 8"



RAM-SKIN-ZE45
RAM® Rugged Boot for ET401 10"

Hardwire Chargers



3PTY-RAM-GDS-CHARGE-V9U
GDS® 20-60VDC Input (12VDC Output)
Hardwire Charger with Male DC 5.5mm

3PTY-RAM-GDS-CHARGE-V10U
GDS® 10-32VDC Input (12VDC Output)
Hardwire Charger with Male DC 5.5mm

Compatible Docks

ET4x 8"



3PTY-RAM-HOL-ZE20PU
Power only

3PTY-RAM-HOL-ZE20PKLU
Power only, Key-Locking

3PTY-RAM-HOL-ZE20PD2U
Power, Dual USB-A

3PTY-RAM-HOL-ZE20PD2KLU
Power, Dual USB-A, Key-Locking

ET4x 10"



3PTY-RAM-HOL-ZE21PU
Power only

3PTY-RAM-HOL-ZE21PKLU
Power only, Key-Locking

3PTY-RAM-HOL-ZE21PD2U
Power, Dual USB-A

3PTY-RAM-HOL-ZE21PD2KLU
Power, Dual USB-A, Key-Locking





Enhanced Durability with IntelliSkin®

- Rugged, drop-protected case that shields the USB-C port by converting it to flat, easy-to-clean pogo pads—eliminating wear from frequent docking and undocking
- An IntelliSkin®-wrapped ET4x work in all Zebra GDS® Docks
- Corner attachment points for shoulder strap accessories
- Works with the scanner version of the ET401 and the version without the scanner
- Dock and IntelliSkin® accommodate expansion backs and other accessories that install to the back of the tablet



3PTY-GDS-SKIN-ZE42-NG

IntelliSkin® Rugged Boot for ET401 8"

3PTY-RAM-GDS-SKIN-ZE20CNG

IntelliSkin® Rugged Boot for ET40/ET45 8"



3PTY-GDS-SKIN-ZE43-NG

IntelliSkin® Rugged Boot for ET401 10"

3PTY-RAM-GDS-SKIN-ZE21CNG

IntelliSkin® Rugged Boot for ET40/ET45 10"

Hardwire Chargers



3PTY-RAM-GDS-CHARGEV3CH2U

GDS® 20-60VDC Input (12VDC Output) Hardwire Charger with Male DC 5.5mm

3PTY-RAM-GDS-CHARGE-V3C3U

GDS® 10-32VDC Input (12VDC Output) Hardwire Charger with Male DC 5.5mm

Compatible Docks



ET4x 8" (with IntelliSkin®)

3PTY-RAM-GDS-DOCK-ZE20PU

Power only

3PTY-RAM-GDS-DOCKKL-ZE20PU

Power only, Key-Locking

3PTY-RAM-GDS-DOCKZE20PD2U

Power, Dual USB-A

3PTY-RAM-GDSDOCKKLZE20PD2U

Power, Dual USB-A, Key-Locking



ET4x 10" (with IntelliSkin®)

3PTY-RAM-GDS-DOCK-ZE21PU

Power only

3PTY-RAM-GDS-DOCKKL-ZE21PU

Power only, Key-Locking

3PTY-RAM-GDS-DOCKZE21PD2U

Power, Dual USB-A

3PTY-RAM-GDSDOCKKLZE21PD2U

Power, Dual USB-A, Key-Locking





Uni-Conn™ Universal Dock for ET4x with IntelliSkin®

- › Works with entire family of ET4x 8"/10" with an IntelliSkin® rugged boot and adapter
- › Lowers entry cost, installation costs, and total cost of ownership
- › Compatible with future Zebra tablets that utilize IntelliSkin®
- › 2-hole and 4-hole AMPS pattern on the back of the dock for mounting



Available Docks



DOCKS

3PTY-RAM-DOCK-U1CPU

Power only

3PTY-RAM-DOCKLRU1CPU

Power, Key-Locking (accessible to the right of tablet)

3PTY-RAM-DOCKLLU1CPU

Power, Key-Locking (accessible to the left of tablet)



ADAPTERS

3PTY-RAM-GDS-U1-ZE20U

8"

3PTY-RAM-GDS-U1-ZE21U

10"





Ergonomic Accessories



3PTY-RAM-GDS-ROTO2-ZE20U
GDS® Roto-Mag™
for Zebra ET4x 8"



3PTY-RAM-GDS-HS1-ZE21U
GDS® Hand-Stand™ w/ Battery Cover
for Zebra ET4x 10"

3PTY-RAM-GDS-HS1M-ZE21U
Magnetic Version



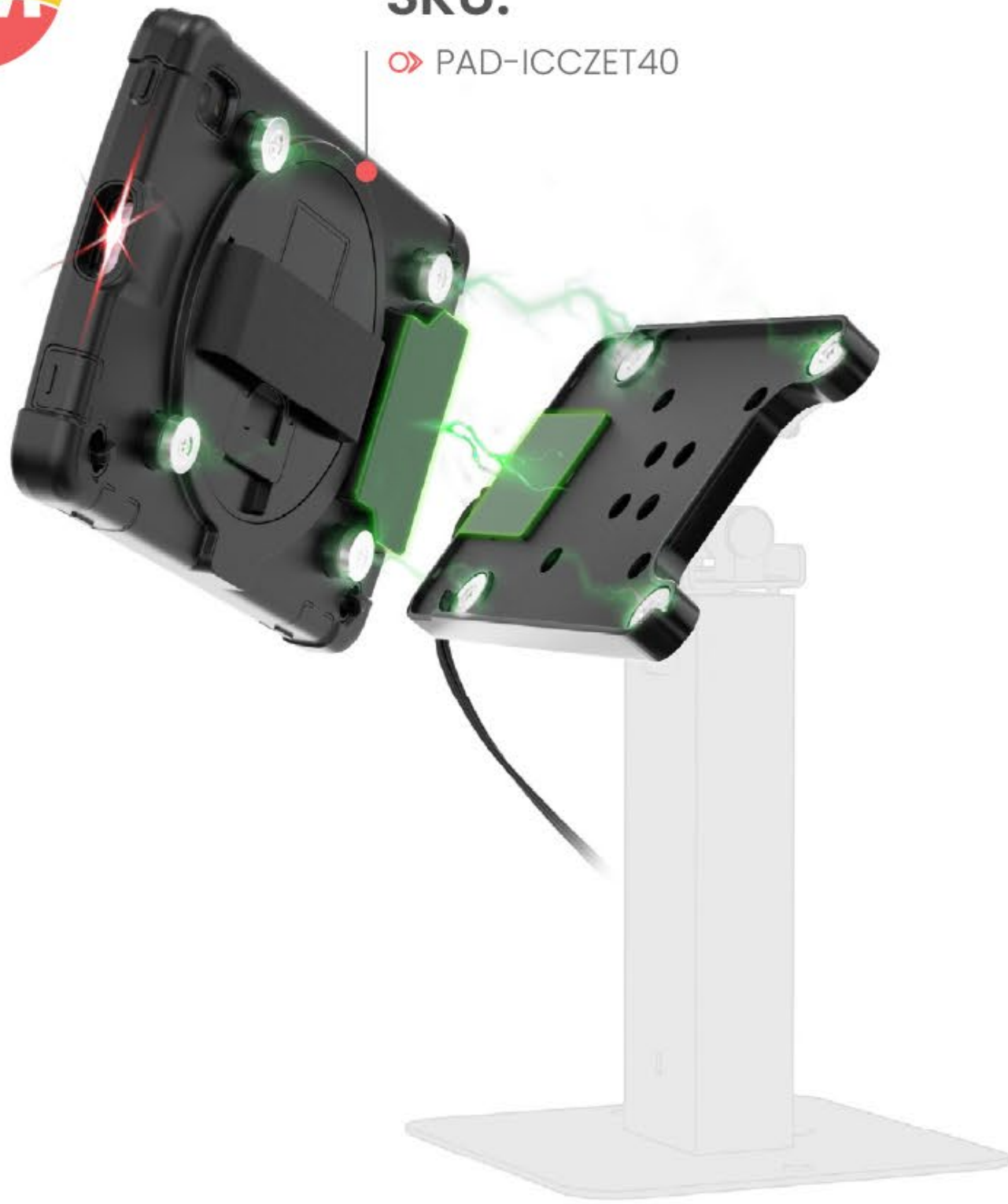
3PTY-RAM-GDS-SS1U
GDS® Shoulder Strap





SKU:

➤ PAD-ICCZET40



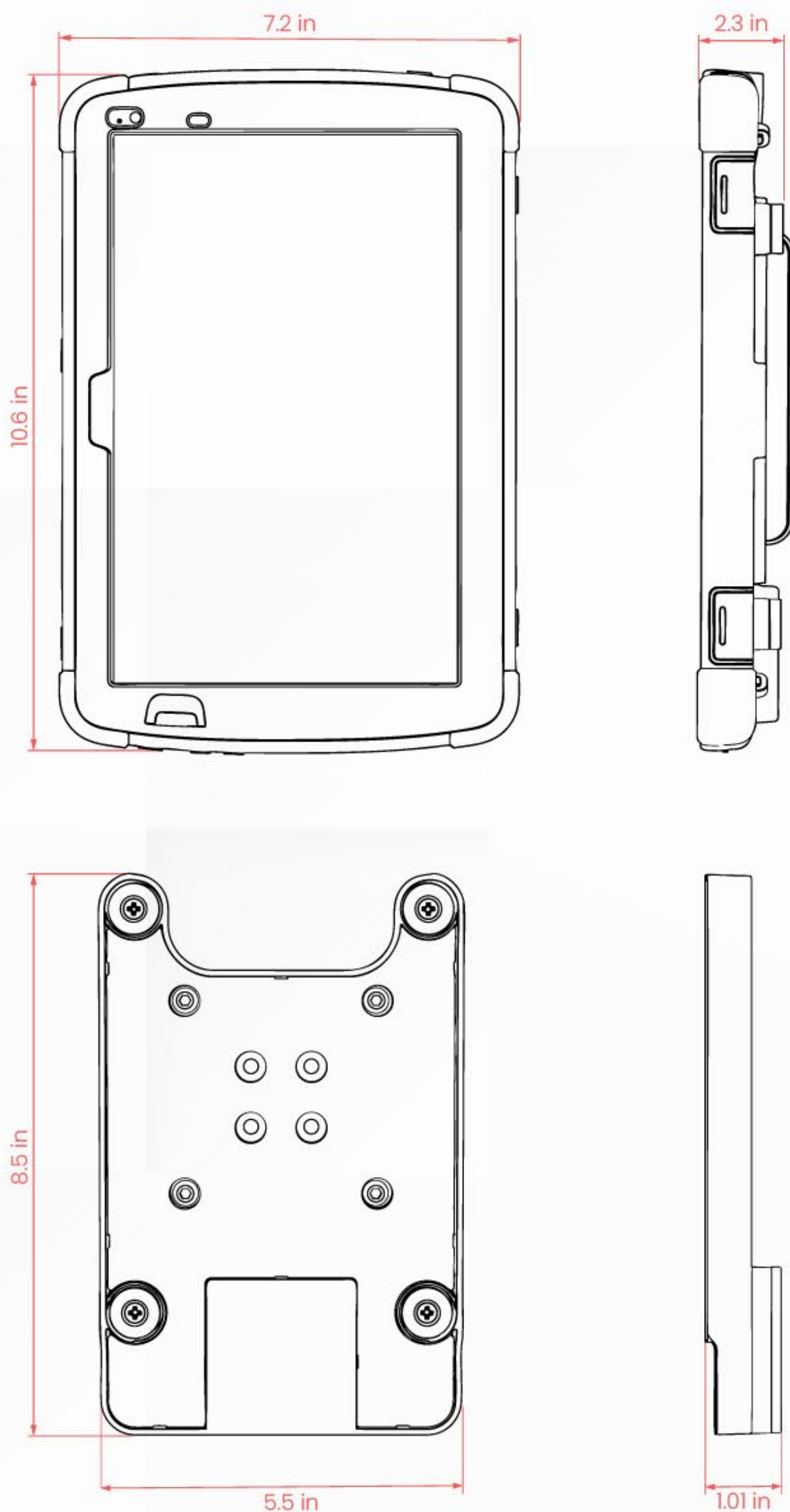
**Kiosk for illustration and not included

INDUCTIVE WIRELESS CHARGING CASE FOR ZEBRA ET40

PRODUCT DATA SHEET



DIMENSIONS:



FEATURES:

- Tailored for a secure fit on the Zebra ET40 tablet
- Supports wireless inductive charging, POGO pin, and USB-C charging
- Features anti-theft internal specialty screws with a secure key tool
 - Includes embedded rear magnets for instant metal surface attachment
- Offers an integrated kickstand for hands-free tabletop use
- Provides an elastic hand strap for ergonomic one-handed operation
- Includes anchor points for optional add-ons like card readers or mounts
- Built with a rugged, impact-resistant hard shell and shock-absorbing layer
- Ensures full access to all cameras, ports, buttons, and scanner features

COMPATIBILITY:

- ZEBRA ET40 Tablet



WIRELESS
CHARGING



BUILT-IN
SCANNER



EMBEDDED
MAGNETS

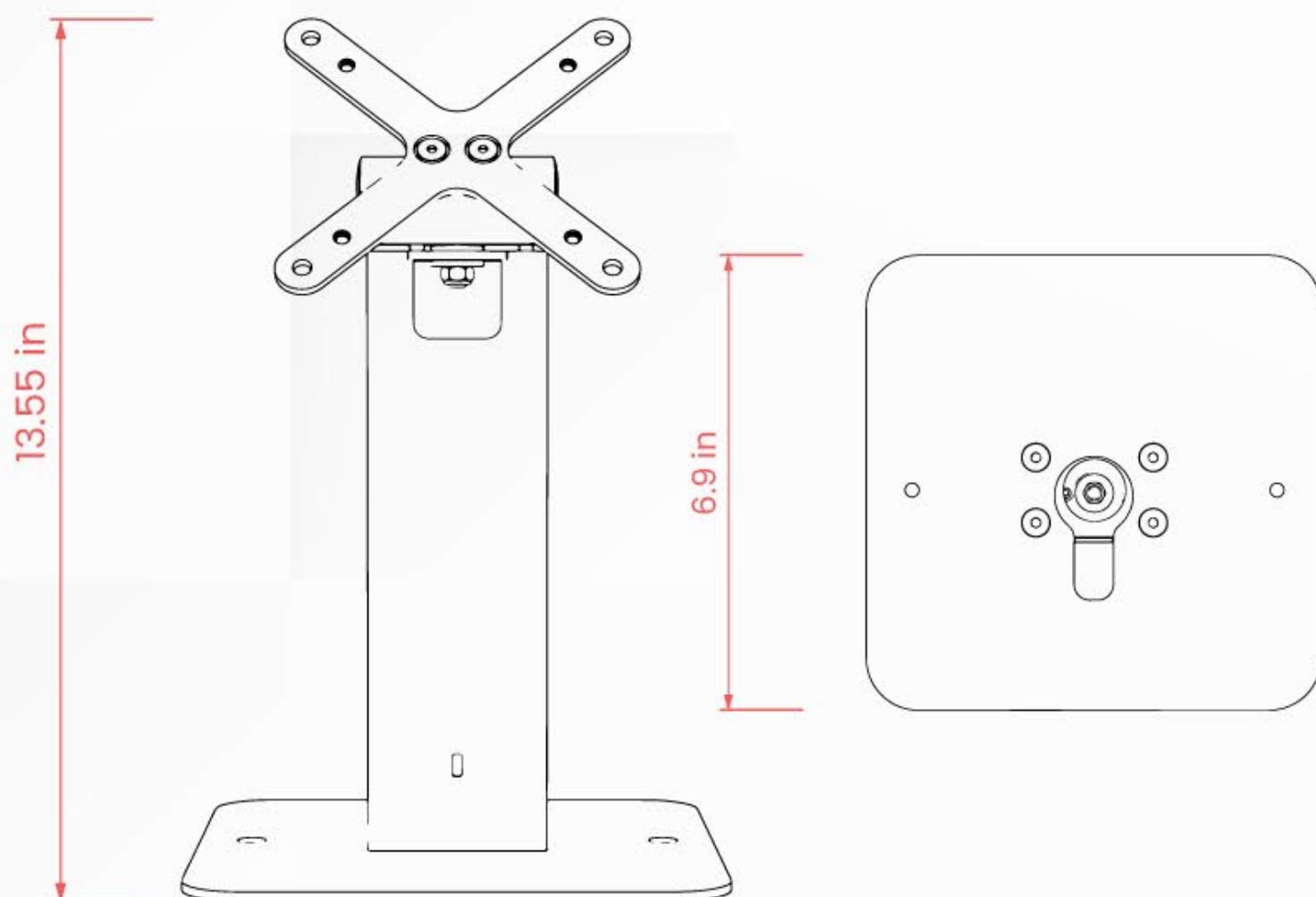


SKU:

» PAD-PARAET40MK

WEIGHT:

» 2.7



PREMIUM LOCKING ENCLOSURE FOR ZEBRA ET40/45/401 PRODUCT DATA SHEET



FEATURES:

- » Designed specifically for Zebra ET40/45/401
- » Anti-theft deterrent Lock and Key
- » Flexible portrait or landscape mounting
- » Interior cable routing
- » Access to ports, buttons and scanner
- » Premium heavy-duty locking enclosure
- » VESA 75mm x 75mm capability, for easy mounting to arms and other VESA equipment

COMPATIBILITY:

- » Zebra ET40/45/401



ANTI-THEFT
DETERRENT ENCLOSURE



PRE-DRILLED
BASE HOLES



BARCODE
SCANNER BUILT-IN



Mobile Docking Solutions

for Zebra ET4X 8" & 10"



RapidDoc™ Kiosk Pro

- Fixed and mobile docking solution for 8" & 10" Zebra ET4X series tablets.
- Zebra AT4X tablet is secured and powered when docked.
- Ability to undock tablet using RFID or Android-based PIN code application.
- USB-C PD interface supported, with negotiated fast charge and USB 2.0 data rates.
- Integrated payment device support for Ingenico or Verifone EMVs.

Part Number	Description
185-01074	RapidDoc Kiosk for Zebra ET4X
185-01109	EZBack, USB-C
185-01108	EZBack, USB-C with payment support
185-01073	Ingenico Link 2500i EMV Cradle
185-00346	Verifone E355 EMV Cradle
185-00700	Ingenico iSMP4 EMV Cradle



RapidDoc™ PoE+ Wall Mount

- Fixed and mobile docking solution for 8" & 10" Zebra ET4X series tablets.
- Zebra AT4X tablet is secured and powered when docked.
- Undock tablet either using RFID or PIN code.
- Install directly onto the wall or an existing VESA Mount.
- Wired data communication via Ethernet.
- Powered via PoE+.

Part Number	Description
185-00080	RapidDoc POE+ VESA Wall Mount RFID
185-01109	EZBack, USB-C
185-01108	EZBack, USB-C with payment support
185-01073	Ingenico Link 2500i EMV Cradle
185-00346	Verifone E355 EMV Cradle
185-00700	Ingenico iSMP4 EMV Cradle
165-01091	Single POE Injector
421-00689	10ft. CAT5e cable

Accessories



One-handed dock and undock with magnets and latches.



USB-C based power and data interface supporting negotiated power delivery.



Optional EMV payment cradles for Ingenico and Verifone payment devices.

[Click or scan the code](#)



[to shop & learn more!](#)

24/7 Call Center Support



+1-800-426-6844



MTI

www.mtigs.com

sales@mtigs.com

503-648-6500



Fixed Docking Solutions

for Zebra ET4X 8" & 10"

Pipeline Table & Floor Mount



- Flexible fixed mount solution with tilt and swivel capability for an enhanced customer experience.
- Integrated tablet charging and USB connectivity.
- Cable management for clean installation, no exposed cables.
- Various mounting options - thru-hole counter mount, weighted baseplate or suction.

Part Number	Description
185-00726	8" Pipeline Stand
185-00729	42" Pipeline Stand
185-01313	EZBack VESA Mount
185-00469	Optional Baseplate for 8" Pipeline
185-0071	Optional Baseplate for 42" Pipeline
421-00685	6ft. USB-C to Right Angle USB-C Cable

Gravity VESA Tabletop Stand



- 75mm & 100mm VESA Mount.
- Tablet can flip front to back to support customer interaction.
- Cables route through the table stand for an elegant install.

Part Number	Description
185-01313	KIT,EZBACK,VESA MOUNT,AA-EZBACK,BLK
185-00211	KIT,TABLE STAND,VESA,AA-GRAVITY,BLK
421-00685	USB-C Charging Cable

Radius Floor Stand



- Robust and secure floor standing mount - 38.5" tall.
- Great for self-service kiosk applications.
- Easy installation and built-in cable routing.
- Internal space for customer-provided USB hubs, dongles or power strips.
- Security screws provide protection against break-ins.

Part Number	Description
185-01313	KIT,EZBACK,VESA MOUNT,AA-EZBACK,BLK
SRA00420	KIT,STAND,RADIUS,AA-RADIUS,BLK
421-00685	USB-C Charging Cable





The Zebra wordmark and logo are trademarks of Zebra Technologies Corp., registered in many jurisdictions worldwide. All other trademarks are the property of their respective owners. ©2025 Zebra Technologies Corp. and/or its affiliates.