

EM45 Series Enterprise Mobile Accessories Guide

The Power of Zebra in Your Pocket.

Revised December 2025



| | | |
|-------------|--|----|
| I. | Accessories that PROTECT devices | |
| 1.1 | Protective case, screen protector, and belt | |
| 1.2 | Protective Case, Screen Protector, and Belt | 3 |
| II. | Accessories that ENABLE productivity solutions | |
| 2.1 | Headset | |
| 2.2 | Wired headset for Workcloud Sync | 4 |
| 2.3 | Wireless headsets for voice-directed picking | 5 |
| III. | Accessories that POWER devices | |
| 3.1 | Cable, and Power Supply Adapters | 6 |
| IV. | Workstation Connect Cradle | |
| 4.1 | Workstation Connect Cradle | 7 |
| 4.2 | Country-specific AC line cords | 8 |
| V. | Third Party Accessories for EM45 RFID | |
| 5.1 | ProClip 3rd Party Vehicle Cradle | 11 |
| 5.2 | RAM 3rd Party Inteliskin and Vehicle Dock | 12 |
| 5.3 | RAM 3rd Party Charging Cradles | 13 |
| 5.4 | RAM 3rd Party Mounts | 14 |
| 5.5 | Mobilis 3rd Party Boot | 15 |
| 5.6 | Mobilis 3rd Party Hand Strap and Holster | 17 |
| 5.7 | Gamber-Johnson InfoCase 3rd Party Boot | 18 |

Rugged Boot, Screen Protector, and Belt



Rugged boot for EM45

SKU# SG-EM45EXO2-01

Protective case for EM45.

- Boot increases drop spec of device from 1.2 m (4 ft.) to 1.5 m (5 ft.)
- *Please note this accessory is a consumable and may require replacement during the device's lifespan.*



Screen protector

SKU# SG-EM45-SCRNPT1-1

One tempered glass screen protector for EM45 Series.

- Includes: Alcohol wipes, cleaning cloth, and instructions needed for screen protector installation.
- Also available as a 10-pack — 10 screen protectors — SKU# SG-EM45-SCRNPT-10

** Please note this accessory is a consumable and may require replacement during the device's lifespan.*



Belt for holster

SKU# 11-08062-02R

Universal belt.

- Extends 48 inches and is 2 inches wide
- Compatible with Mobilis Holster [3PTY-MOB-031002](#) (sold separately).

** Please note this accessory is a consumable and may require replacement during the device's lifespan.*

Accessories that enable productivity solutions



Headsets

Close gaps, Open possibilities with Workcloud Sync

Usher in a new era of transformation—one led by your frontline and powered by Zebra Workcloud Sync. One where communication and information flows freely and gaps between teams, workflows and data are closed.

With Workcloud Sync, hindered workers become effective problem solvers, contributing their best. Critical workflows are streamlined in one place, on one device, equipping workers with the information they need, right at their fingertips.

Only Zebra offers the most complete lineup of software and rugged hardware with the scalability, support and service needed to make the greatest impact where it counts—on the frontline.

[Learn more about you can elevate your frontline workers with Zebra Workcloud Sync.](#)



Wired headsets for Workcloud Sync

SKU# HDST-USBC-PTT1-01

PTT headset with USB-C connector; one-piece solution for EM45 Series.

- For Push-To-Talk (PTT) applications with volume up/volume down/PTT buttons. Compatible with PTT Express/PTT Pro.
- Rotating earpiece allows for right or left ear configuration. Mono headset with microphone.
- Includes clip for attaching PTT button to clothing.

Headsets

Rugged Bluetooth and corded HD voice headsets for the most demanding industrial environments

When it comes to enabling speech-driven applications and voice communications in warehouses, manufacturing plants and outdoor yards, you need a headset that is specially designed for the job. The HS3100 Bluetooth and HS2100 corded headsets are loaded with features that offer everything you need in an industrial headset.



Wireless headsets for voice-directed picking

HS3100 rugged Bluetooth headset

Bluetooth headset for voice-directed picking applications for EM45 Series.

- Noise cancellation tuned for Voice-Directed Picking applications.
- Swap batteries on the fly — without losing the Bluetooth connection.
- Split-second tap-to-pair simplicity using NFC. 15 hours of battery power.

| SKU# | Description |
|---------------------------------|---|
| HS3100-OTH | HS3100 Bluetooth Headset Over-The-Head Headband includes HS3100 Boom Module and HSX100 OTH Headband Module |
| HS3100-BTN-L | HS3100 Bluetooth Headset (Behind-the-neck headband left) |
| HS3100-OTH-SB | HS3100 Bluetooth Headset (Over-the-head headband) includes HS3100 Shortened Boom Module and HSX100 OTH headband module |
| HS3100-BTN-LSB | HS3100 Bluetooth Headset (Behind-the-neck headband left) includes HS3100 Shortened Boom Module and HSX100 BTN headband module |
| HS3100-SBOOM-01 | HS3100 Shortened Boom Module (includes microphone boom, battery and windscreen) |

Accessories that power devices



Cable and Power Supply Adaptor

| SKU# | Description | Note |
|------------------------------------|--|--|
| CBL-EC5X-USBC3A-01 | USB-C to USB-C communications and charging cable, 1M long; support 3.0 superspeed and fast charge. | Sold separately. To be used with PWR-WUA5V45W1XX (replace “XX” in SKU as follows to get the right plug style based on region.) <ul style="list-style-type: none">• US (United States) • GB (United Kingdom) • EU (European Union) • AU (Australia) • CN (China) • IN (India) • KR (Korea) |
| PWR-WUA5V45W1US | USB type C power supply adaptor with United States plug. USB PD 3.1 power supply with an input of 100-240VAC and a self-adjusting output ranging from 5V/3A to 20V/2.25A. | Sold separately. Used with USB-C Cable (CBL-EC5X-USBC3A-01) to charge device. |
| PWR-WUA5V45W1EU | USB type C power supply adaptor with European Union plug. USB PD 3.1 power supply with an input of 100-240VAC and a self-adjusting output ranging from 5V/3A to 20V/2.25A. | Sold separately. Used with USB-C Cable (CBL-EC5X-USBC3A-01) to charge device. |
| PWR-WUA5V45W1GB | USB type C power supply adaptor with United Kingdom plug. USB PD 3.1 power supply with an input of 100-240VAC and a self-adjusting output ranging from 5V/3A to 20V/2.25A. | Sold separately. Used with USB-C Cable (CBL-EC5X-USBC3A-01) to charge device. |
| PWR-WUA5V45W1AU | USB type C power supply adaptor with Australia plug. USB PD 3.1 power supply with an input of 100-240VAC and a self-adjusting output ranging from 5V/3A to 20V/2.25A. | Sold separately. Used with USB-C Cable (CBL-EC5X-USBC3A-01) to charge device. |
| PWR-WUA5V45W1CN | USB type C power supply adaptor with China plug. USB PD 3.1 power supply with an input of 100-240VAC and a self-adjusting output ranging from 5V/3A to 20V/2.25A. | Sold separately. Used with USB-C Cable (CBL-EC5X-USBC3A-01) to charge device. |
| PWR-WUA5V45W1KR | USB type C power supply adaptor with Korea plug. USB PD 3.1 power supply with an input of 100-240VAC and a self-adjusting output ranging from 5V/3A to 20V/2.25A. | Sold separately. Used with USB-C Cable (CBL-EC5X-USBC3A-01) to charge device. |
| PWR-WUA5V45W1IN | USB type C power supply adaptor with India plug. USB PD 3.1 power supply with an input of 100-240VAC and a self-adjusting output ranging from 5V/3A to 20V/2.25A. | Sold separately. Used with USB-C Cable (CBL-EC5X-USBC3A-01) to charge device. |
| PWR-WUA5V45W1AR | USB type C power supply adaptor with Argentina plug. USB PD 3.1 power supply with an input of 100-240VAC and a self-adjusting output ranging from 5V/3A to 20V/2.25A. | Sold separately. Used with USB-C Cable (CBL-EC5X-USBC3A-01) to charge device. |



EM45 Series

Introducing the new Workstation Connect Cradle for EM45 Series. This accessory allows EM45 to connect to multiple, purpose-built peripherals and enable Zebra Workstation Connect on an external monitor. The Connect Cradle offers connections for standard workstation setups (monitor, keyboard, mouse).



Connect Cradle

SKU# CRD-EM4X-1SNWS-01

Workstation

- This Connect Cradle, allows users to use EM45 enterprise mobile devices as a workstation or kiosk. Includes HDMI, Ethernet, USB-A (x4) ports, shims, and 3.5mm headset jack. Power supply, DC line cord and AC line cord are all sold separately.

Power Supply & DC Line Cord

SKU# PWR-BGA12V50W0WW | SKU# CBL-DC-388A2-01

Power Supply | DC Line Cord

- Power Supply [PWR-BGA12V50W0WW](#) for workstation connect cradle: 100-240 VAC, 12VDC, 4.16A.
- DC Line Cord [CBL-DC-388A2-01](#) to be with used with the above power supply for Workstation connect cradle
- Country-specific AC line cord is required ([Listed here](#)).

AC line cords

Country-specific AC line cords: grounded, 3-prong

| SKU# | Country / region | Note |
|-------------------------------|---|--|
| 23844-00-00R | North America (United States, Canada, Mexico) | 7.5 feet long Commonly used with chargers mounted in server racks |
| 50-16000-678R | North America (United States, Canada, Mexico) | 3 feet long |
| 50-16000-221R | North America (United States, Canada, Mexico) | 6 feet long |
| 50-16000-727R | Brazil | 1.8 meters (6 feet) long |
| 50-16000-680R | Argentina | 1.8 meters (6 feet) long |
| 50-16000-217R | American Samoa, Australia, New Guinea | 1.8 meters (6 feet) long |
| 50-16000-218R | Japan | 1.8 meters (6 feet) long |
| 50-16000-219R | Antigua, Bermuda, Burma, Channel Islands, Hong Kong, Iraq, Ireland, Malaysia, North Ireland, Scotland, Singapore, United Kingdom, Wales | 1.8 meters (6 feet) long |
| 50-16000-257R | China | 1.8 meters (6 feet) long |
| 50-16000-220R | Europe, Abu Dhabi, Bolivia, Dubai, Egypt, Iran, Korea, Russia, Vietnam | 1.8 meters (6 feet) long |
| 50-16000-671R | Italy | 1.8 meters (6 feet) long |
| 50-16000-669R | India, S. Africa, Africa | 1.8 meters (6 feet) long |



Power supply, cables, and adaptors

Country-specific AC line cords: ungrounded, 2-prong

| SKU# | Country / region | Note |
|-------------------------------|---|-----------------------|
| 50-16000-182R | United States | Type A NEMA 1-15 plug |
| 50-16000-255R | Europe, Abu Dhabi, Bolivia, Dubai, Egypt, Iran, Korea, Russia, Vietnam. | Type C CEE7/16 plug |
| 50-16000-670R | Bermuda, Hong Kong, Iraq, Ireland, Malaysia, Singapore, United Kingdom. | |



Third Party Accessories for EM45 Series

Note: Products sold that do not bear the Zebra brand name are serviced and supported exclusively by their manufacturers in accordance with terms and conditions packaged with the products. Zebra's Limited Warranty does not apply to products that are not Zebra branded, even if packaged or sold with Zebra products. Please contact the manufacturer directly for technical support and customer service.

Note: The RAM Intelliskin and any variant are designed exclusively for stationary docking and stationary charging purposes. It is neither intended nor approved for wearable use, and any attempts to use this device in a wearable manner are strongly discouraged.

[Back to Table of Contents](#)



ZEBRA

EM45 DEVICE CRADLES

PROCLIP CRADLES PROVIDE:

- USB-C 3.1 Docking Connection
- Supports Power Delivery, Video and Audio over USB-C
- Easy one-handed drop-in docking and undocking
- Channeled sidewalls guide the device into the cradle and hold the device securely

- Tilt-swivel on back gives users an optimized viewing angle
- Heavy-duty construction provides protection and longevity
- Custom design to fit the device with or without the rugged boot



| CRADLES FOR ZEBRA EM45 | | | |
|------------------------|------------|-----------------|-------------|
| PART # | NON-CHARGE | USB-C CONNECTOR | RUGGED BOOT |
| 3PTY-PCLIP-711412 | • | | • |
| 3PTY-PCLIP-711411 | • | | |
| 3PTY-PCLIP-217183 | | • | • |
| 3PTY-PCLIP-217182 | | • | |

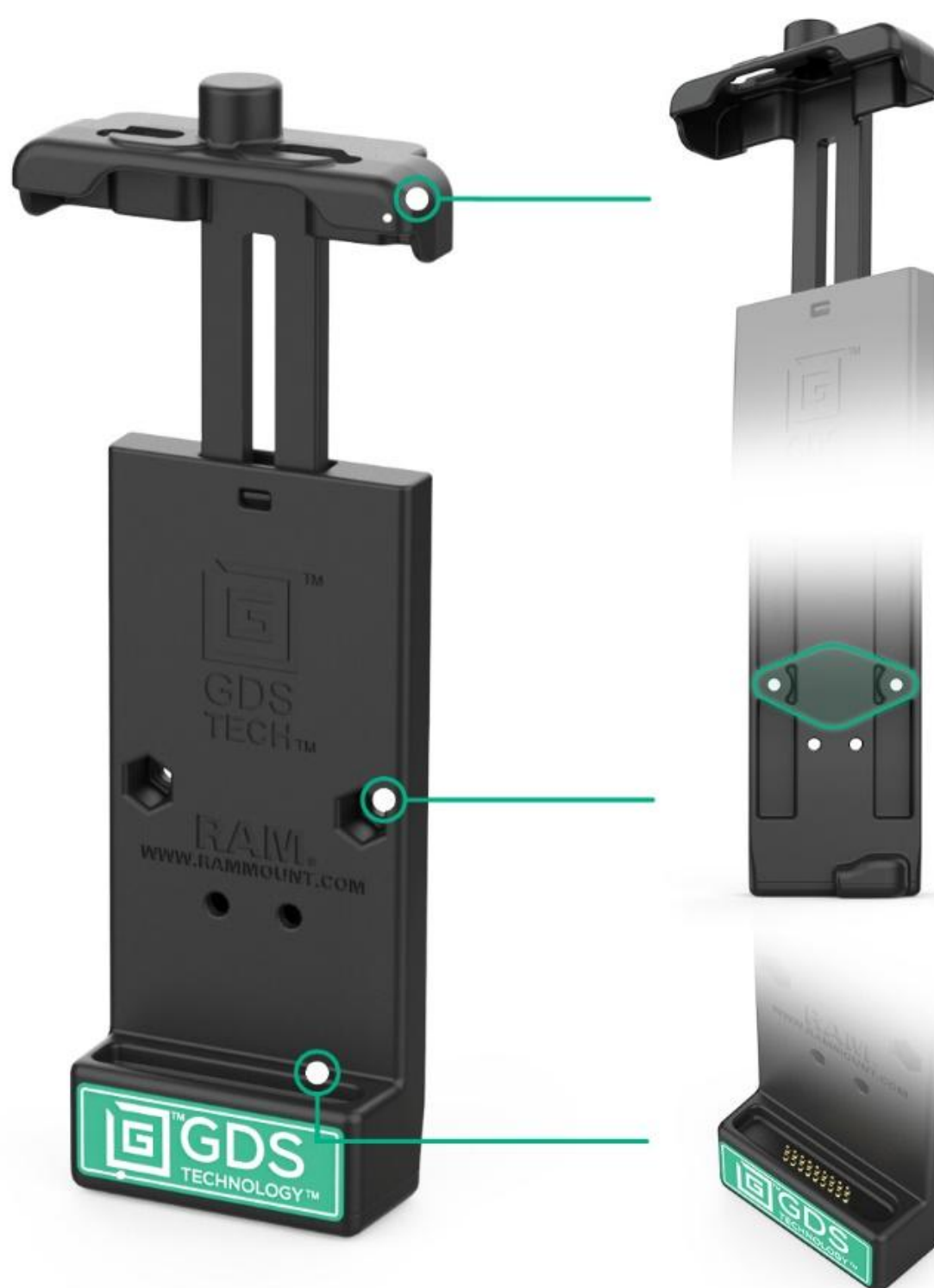


SCAN OR CLICK TO LEARN MORE >



IntelliSkin® with GDS® Tech™ for Zebra EM45 Handheld Computer

Next generation durability, fast charging, and ease of use
providing a remarkable boost in efficiency your workforce needs.



Docking

Spring-loaded top
cup for easy one-
handed docking
and removal

Mounting

2-Hole AMPS
pattern for
mounting a ball
adapter

Charging

Pogo pin docking
contacts for
charging

3PTY-RAM-GDS-DOCK-V3CPAU

GDS® Vehicle Dock for Phones with IntelliSkin®

3PTY-RAM-SKIN-ZE37CNC

IntelliSkin® with USB-C Port
for EM45

3PTY-RAM-SKIN-ZE37-NC

IntelliSkin® for EM45



Key Differentiator

The internal USB-C connector protects the
port, converting it into flat, easy-to-clean pogo
pads for effortless docking, extending device
life, and reducing ownership costs.

Compatible Hardwire Chargers

3PTY-RAM-GDS-CHARGE-V3C2U

GDS® 10-30V Power Delivery Hardwire Charger

3PTY-RAM-GDS-CHARGEV3CH2U

GDS® 30-64V Power Delivery Hardwire Charger



rammount.com | 1-800-497-7479 | sales@rammount.com

Patented and Pats. Pend.



GDS® Charging Docks

for Zebra EM45 Handheld Computer



3PTY-RAM-GDS-DOCK-D7U

GDS® Desktop Dock with Power Delivery - Small Tablets & Phones



3PTY-RAM-GDS-DOCK-6G16P

GDS® 6-Port Charging Dock for Tablets and Phones with IntelliSkin®



3PTY-RAMGDSDOCK6G16PRJ45

GDS® 6-Port Charging Dock with RJ45 Ports for Tablets and Phones with IntelliSkin®



Compatible with any Zebra Handheld wrapped in IntelliSkin®

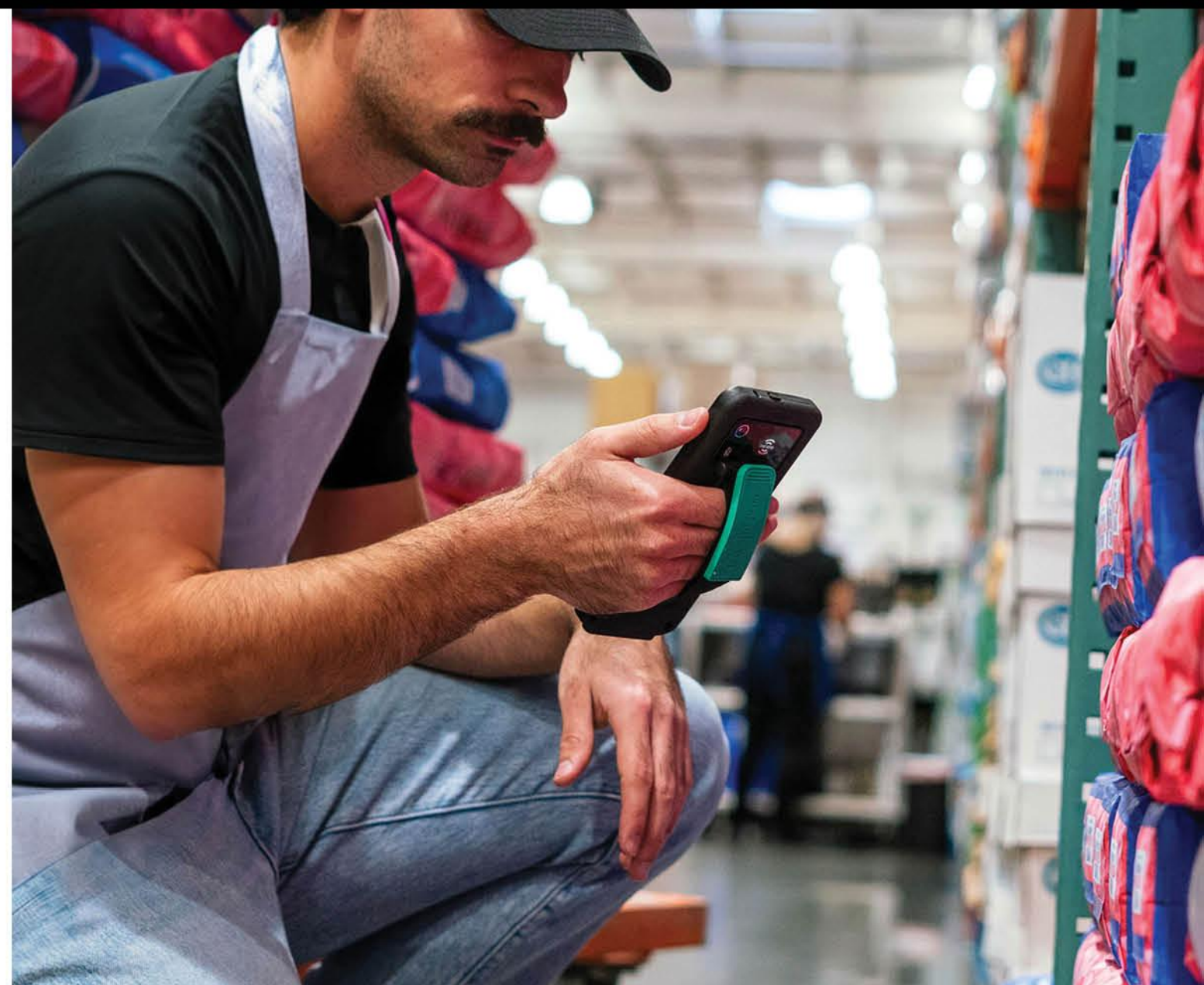
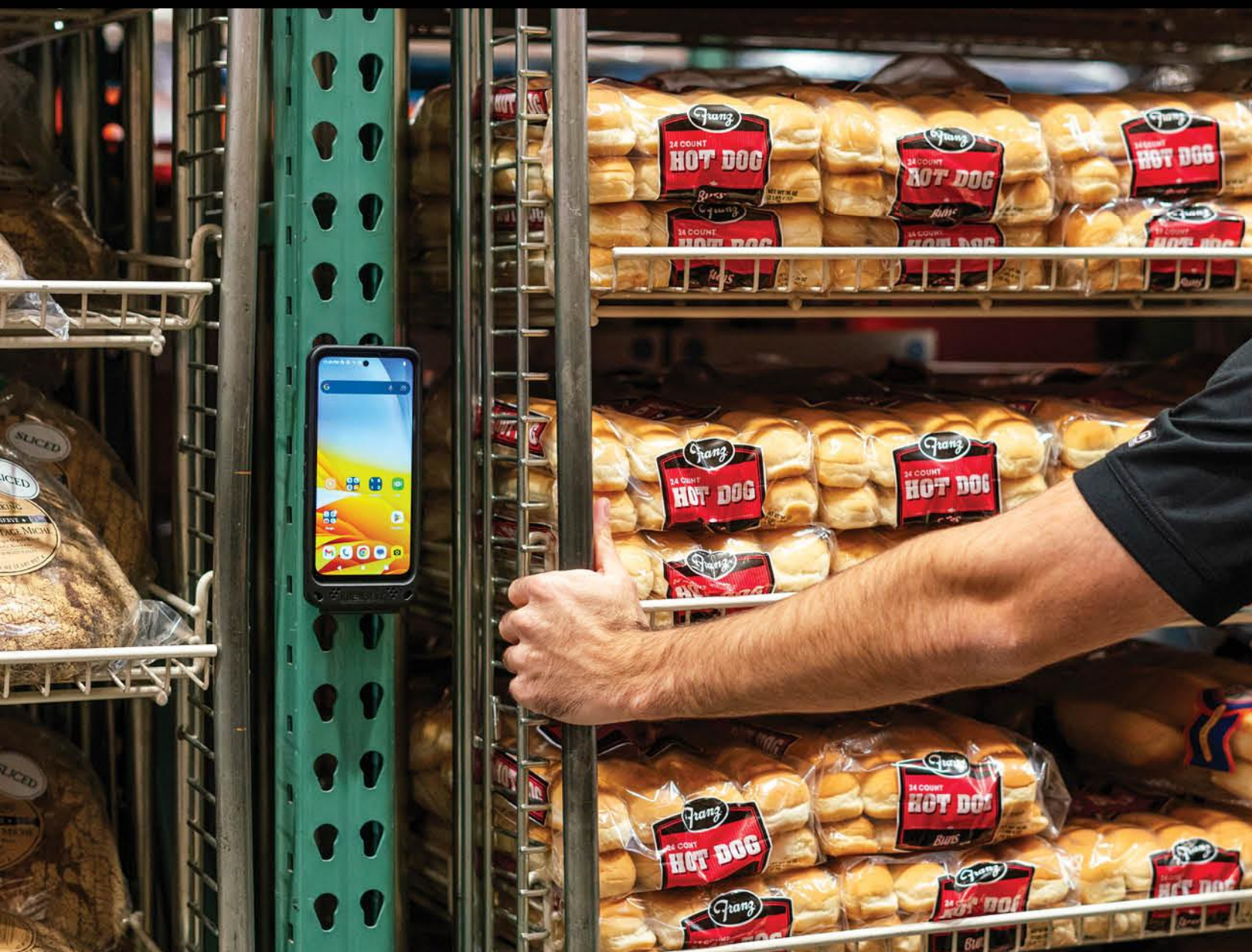
3PTY-RAM-GDS-DOCK-6G15P

GDS® 6-Port Charging Dock for Zebra Handheld PCs with IntelliSkin®



3PTY-RAMGDSDOCK6G15PRJ45

GDS® 6-Port Charging Dock with RJ45 Ports for Zebra Handheld PCs with IntelliSkin®



RAM® Accessories & Mounts for Zebra EM45 Handheld Computer



3PTY-RAM-102U-B-247
RAM® Forklift Mount C-Size
with Short Arm

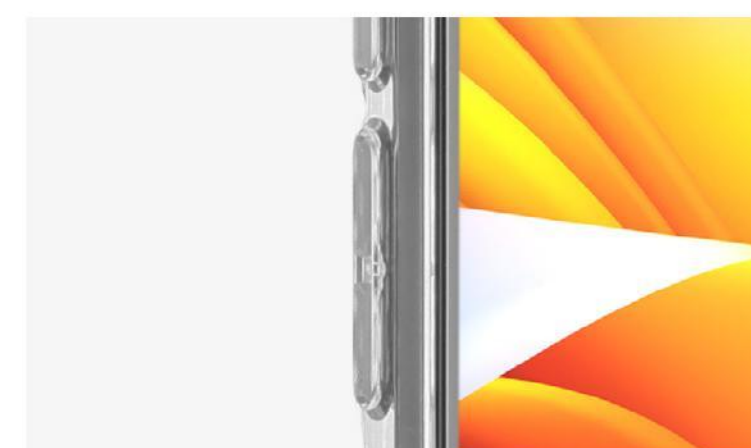
CLEAR RUGGED BOOT FOR ZEBRA EM45 RFID

Increase the lifetime of your EM45 device by protecting it with the MOBILIS® rugged boot!

The EM45 Zebra is designed for intensive use in environments where drops and shocks are frequent. The MOBILIS® Protec case offers unbeatable protection.



DROP SAFE CORNERS
4 air pockets to absorb shocks.
Up to **500 drops** from **1.20m/4ft**



RESPONSIVE BUTTONS
High **tactile reactivity**



ACCESS TO ALL PORTS
Allows charging via USB-C

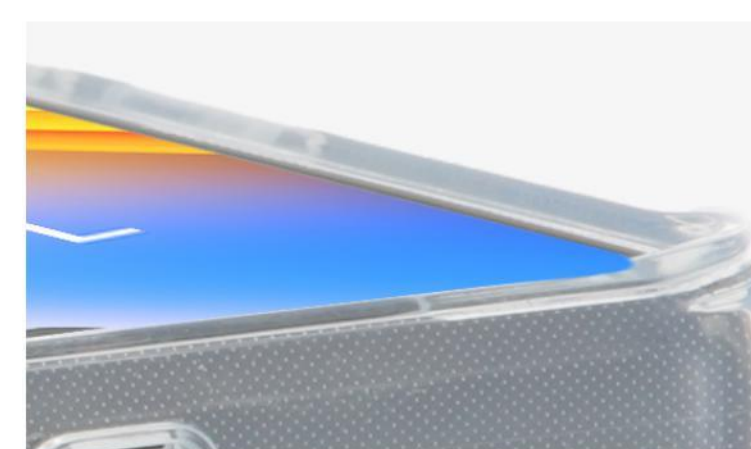
Origine rugged boot for Zebra EM45 RFID
3PTY-MOB-048057



ANTIMICROBIAL PROTECTION
Sanitized® labeled technology:
Eliminates **99%** of microbes in **24 hours**



ECO-DESIGN
Case made with **100% recycled material** & **100% recyclable**



ADVANCED RAISED EDGES
Design to protect the screen and camera lens **in the event of falls**

BLACK RUGGED BOOT FOR ZEBRA EM45 RFID

Increase the lifetime of your EM45 device by protecting it with the MOBILIS® rugged boot!

The EM45 Zebra is designed for intensive use in environments where drops and shocks are frequent. The MOBILIS® Protech case offers unbeatable protection.



Rugged boot for Zebra EM45 RFID
3PTY-MOB-065029

40X
MILITARY
STANDARD

x1000
DROPS
1m50/5ft

ORIGINE
FRANCE
GARANTIE

AFNOR Cert. 107672



AIRCELL SYSTEM

4 air pockets to absorb shocks.
Up to **1000 drops from 1.50m/5ft**



RESPONSIVE BUTTONS

High **tactile reactivity**



HANDSTRAP READY

Compatible with MOBILIS® Hand Strap



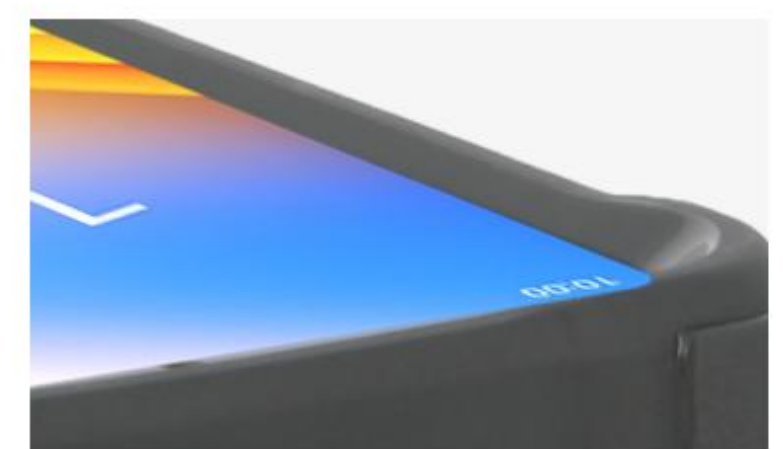
ANTIMICROBIAL PROTECTION

Sanitized® labeled technology:
Eliminates 99% of microbes in 24 hours



ECO-DESIGN

Case made with **30% recycled material & 100% recyclable**



ADVANCED RAISED EDGES

Design to protect the screen and camera lens **in the event of falls**



EXPLORE OUR
ZEBRA PRODUCTS



ADDITIONAL PRODUCTS



HAND STRAP
3PTY-MOB-001367



HOLSTER SIZE M
3PTY-MOB-031002

BOOST YOUR BRAND VISIBILITY !



Customize your protective boots
with your color and logo

LEARN MORE, CONTACT US!

CONTACT :

✉ Imebrouki@mobiliscase.com
☎ +33 682 005 064
💻 datacapture.mobiliscase.com

ErGo Case Solution Suite for Zebra EM45

ERGO CASE only
PART NUMBER: 3PTY-INF-RC-EM45

SILICONE HANDSTRAP
PART NUMBER: 3PTY-INF-RC-EM45HSTP

POPSOCKETS® ADHESIVE POPGRIP®
PART NUMBER: 3PTY-INF-RC-EM45POP

WALLET
PART NUMBER: 3PTY-INF-RC-EM45WLLT



Rugged Protection and Enhanced Mobility

The InfoCase Zebra EM45 Case Solution Suite provides professional workforces with a range of options to improve the use and handling of their EM45 in their daily workflow. Whether you're looking for a comfortable grip, convenient carrying and access, or mobile point of sale capabilities, our cases can be tailored to meet your needs.

Key Features

- Fits both RFID and non-RFID EM45 models
- Sleek and protective with minimal added bulk
- Corporate branding and custom colors available (MOQ required)
- Removeable window insert to support RFID EM45
- Designed with peripherals that lock in place with screws

Silicone Handstrap



PopSockets® Adhesive PopGrip®



Wallet



Removable Insert for RFID

